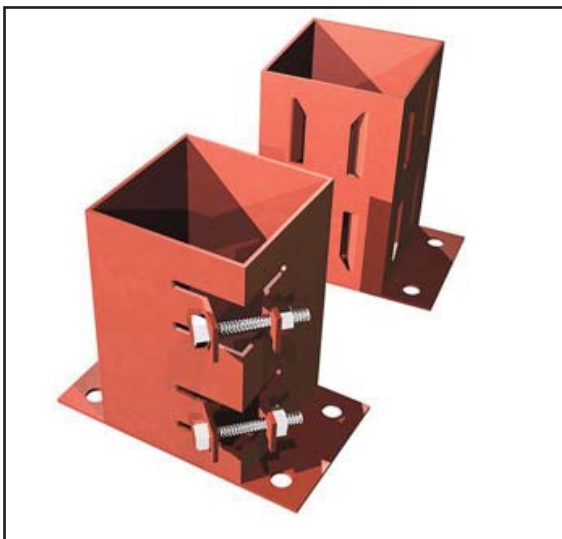




WIRE PRODUCTS

METPOST BOLTDOWN



Post Size	Method	Fixing	Colour
3" x 3"	Boltdown	Sidebolt	Red
4" x 4"	Boltdown	Sidebolt	Red

For fixing posts on an existing concrete base, against a flush surface or onto a wall use.

The Metpost Flush Fitting Bolt Down is ideal where circumstances dictate that a post should be fixed against a flush surface, or alternatively mounted onto a wall. It is particularly suitable for patio fencing, decking, pergolas, car ports and for fixing timber fencing to walls.

The Flush Fitting Bolt Down is available to fit 75mm (3") and 100mm (4") timber posts in both Wedge Grip and System 2 fixings.

